

Principal's Welcome

I am delighted to welcome you to our Academy and I really hope that this prospectus gives you a flavour of the Academy and what it might be like to be a student and a parent or carer of a student here.

As a parent of three children, my values as a Principal are based on students being safe, being allowed to develop as individuals and on providing an experience that allows them to find and follow their passion in life.

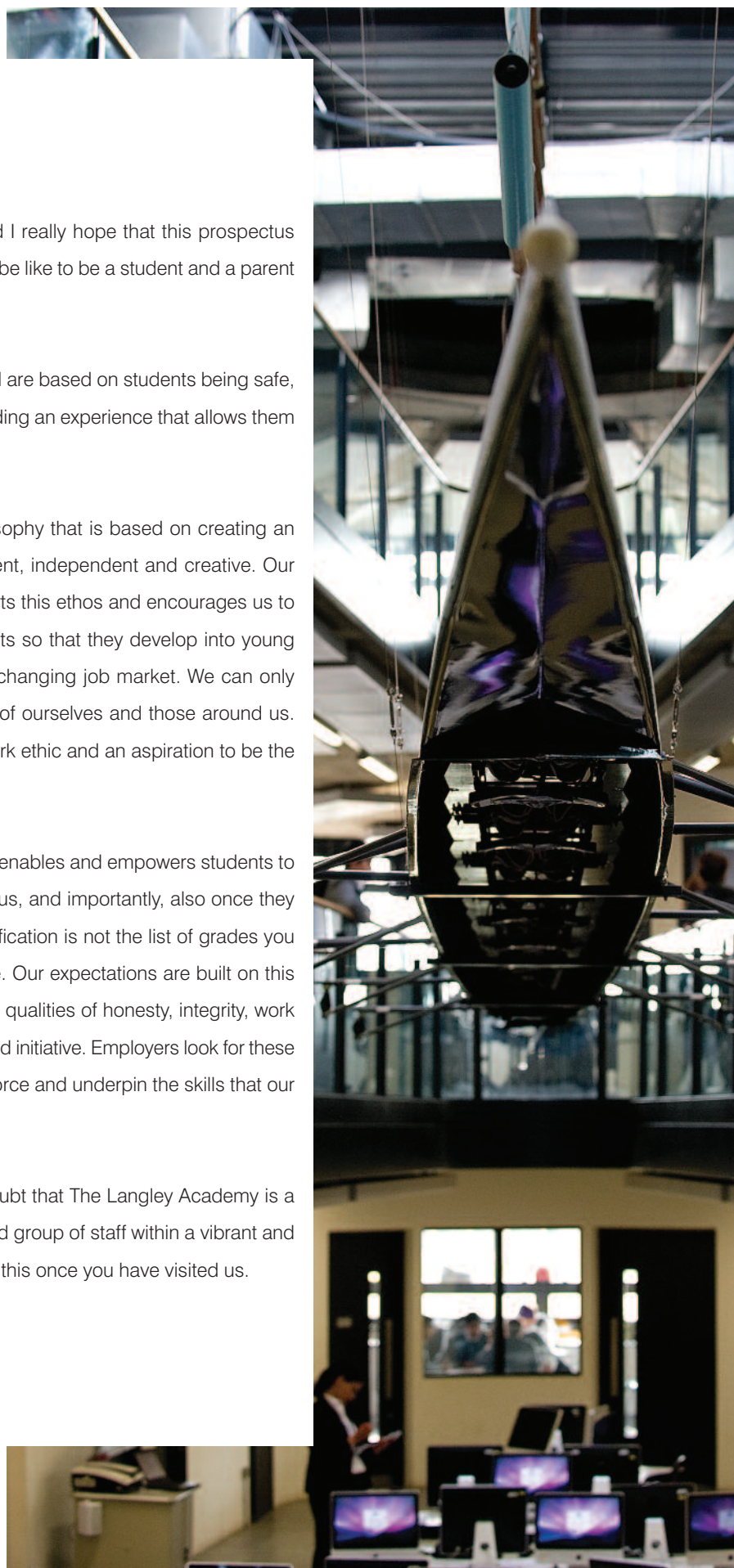
We provide unique opportunities for all with a philosophy that is based on creating an atmosphere that allows students to become confident, independent and creative. Our strapline 'curiosity, exploration and discovery' supports this ethos and encourages us to think differently and in a way that challenges students so that they develop into young adults capable of competing favourably in an ever changing job market. We can only achieve this if we have extremely high expectations of ourselves and those around us. Pride and achievement are created with a serious work ethic and an aspiration to be the best we can be.

In our view schools should provide an education that enables and empowers students to live full and enriched lives throughout their time with us, and importantly, also once they have left us. It is also our view that the greatest qualification is not the list of grades you achieve in each subject, but the person you become. Our expectations are built on this core belief and so we place a great emphasis on the qualities of honesty, integrity, work ethic, selflessness, resilience, teamwork, innovation and initiative. Employers look for these qualities – qualities that will support a stronger workforce and underpin the skills that our social structure, families and friends depend upon.

I am truly inspired by our students and I am in no doubt that The Langley Academy is a very special place supported by a remarkably talented group of staff within a vibrant and diverse community. I am sure that you will agree with this once you have visited us.

Rhodri Bryant, Principal

Rhodri Bryant,
Principal



Head of Sixth Form

Welcome

Thank you for choosing to find out more about The Langley Academy 6th form. We hope you find this prospectus useful and informative.

At The Langley Academy 6th Form our aim is to provide you with the knowledge, skills and qualifications to maximise academic achievement and develop a successful career. We offer courses that will challenge you physically, academically, creatively and personally. With AS/A2 levels and BTECs, we are able to tailor provisions to your individual needs.

While at The Langley Academy, you will have the opportunity of participating in a range of extra-curricular activities, work experience and contribute to both the Academy and the wider community through community service. You will also become a Prefect.

Since the opening of The Langley Academy in 2008, the 6th Form has quickly established itself as a thriving, successful and popular choice. In 2009 we opened our new 6th Form Centre allowing our students the private study and social facilities that they deserve, which was extended last year. Our study facilities, within the dedicated 6th Form Centre ensure that our students have the best possible resources for independent study and research.

We set ourselves high standards for the quality of learning and teaching and our dedicated, experienced and enthusiastic staff help provide exciting and challenging lessons aimed to enthuse and encourage independent learning. Students aren't just taught to survive the rigours of the competitive university application process and life in the workplace, but complement their core studies by contributing to their community and mastering transferable skills such as negotiation, collaboration and cooperation.

If you are beginning to think about the next stage in your learning, please take a closer look at the prospectus.

I look forward to meeting you and discussing your application.

Mrs L Humber

Director of Sixth Form



Courses

We currently offer a range of different subjects to bring out the best in you, for all abilities and all interests. We constantly review and update our course offer to ensure that students have the best options preparing them for the requirements of university placements. The Langley Academy offers the following courses depending on student uptake.

Level Two Courses

BTEC First Diploma in Business (equivalent to 4 GCSEs)

Level Three Courses

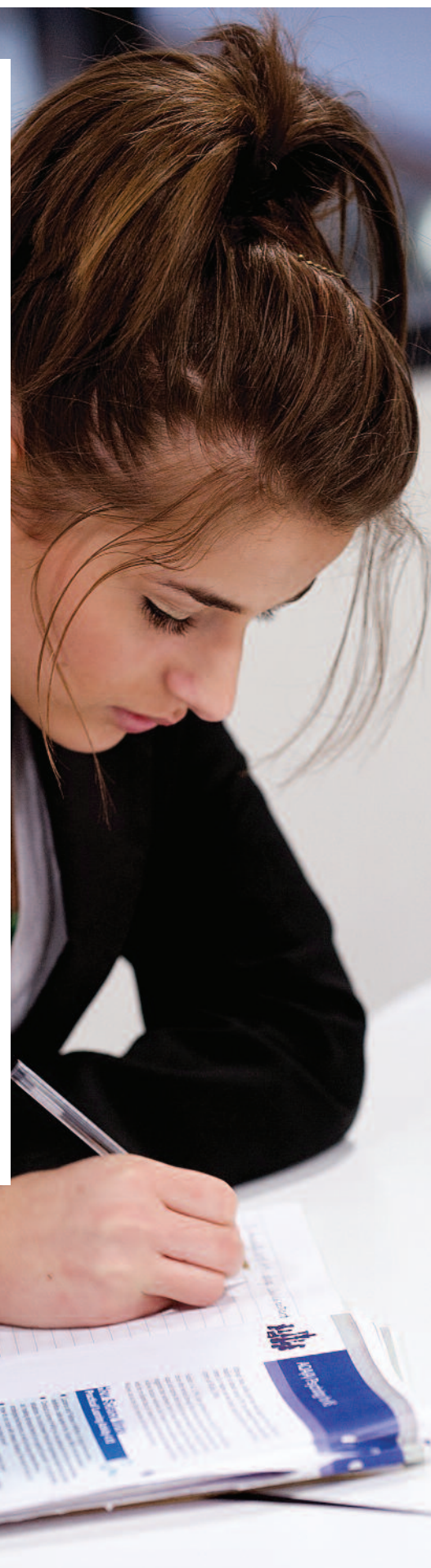
BTEC Applied Science National Certificate (equivalent to 1 'A' level)

BTEC Extended Diploma in Business

BTEC Extended Diploma In Sport (Performance and Excellence)

BTEC Extended Diploma in Health & Social Care (Health Studies)

Art
 Biology
 Business
 Chemistry
 Drama
 Economics
 English
 Film Studies
 French
 Further Mathematics
 Geography
 History
 ICT
 Law
 Mathematics
 Media Studies
 Physical Education
 Physics
 Philosophy & Ethics
 Product Design
 Psychology
 Sociology



Care, Support & Guidance

6th Form Tutors

The 6th Form Tutor is a central figure for students at The Langley Academy. Tutors have pastoral oversight for a group of either Year 12 or Year 13 students. Year 12 and Year 13 Tutor Groups (arranged according to subject) meet daily during 6th Form Tutor time between 10a.m. and 10.30 a.m.

All tutors have an overview of each student within their Tutor Group and should be the first point of contact between the student, and/or parent.

Tutors:

- Monitor attendance and behaviour
- Monitor academic progress
- Provide information, advice, support and guidance
- Encourage engagement in 6th Form, academy life and the wider community
- Support students through the UCAS process by co-ordinating and drafting references
- Support the student to develop socially, culturally, morally and spiritually

Alongside the 6th Form Tutor Group, our students also have the unique opportunity to work with Vertical House Tutor Groups lower down in the Academy, for example delivering PSHE, leading activities, reading, literacy support and mentoring younger students.

Next Steps Advice & Guidance Card

We recognise that some students, may, as they continue their learning, need extra support and guidance from their subject teachers in order to reach their potential. As a way of supporting these students, dependent on criteria, they will be placed on a Next Steps Advice & Guidance Card (NSA&G).



TLA AS Entry Requirements 2011 - 2012

The whole picture:

5A* - C Grades including English Grade C & Maths Grade C

Grade	Students should consider
Mainly A* - B at GCSE	IB
Mainly B's and above at GCSE	4 A Levels
Mainly C's & above at GCSE and/or BTEC	3 A Levels or BTEC paired with AS Level
Mainly C's & below at GCSE and/or BTEC	BTEC Extended Diploma (equivalent to 3 A Levels)
Mainly D's/E's at GCSE and/or BTEC	BTEC First Diploma (equivalent to GCSE)

Prerequisites:

International Baccalaureate Diploma Programme – separate sheet according to Slough Grammar Entry Requirement

AS Level – Maths and English grade C, however, a grade B is necessary to continue with certain A Levels, listed below:

A Level Subject	GCSE Prerequisite
Further Maths	Maths A-A*
Maths	Maths B
Chemistry and Physics	Science B and Maths B
Biology	Science B and English B
English	English Language C and English Literature B or English Language B
Economics, Law, Psychology, Sociology	English B
French	French B

BTEC Qualification

BTEC Qualification	GCSE Prerequisite
Any Extended Diploma (eq 3 A Levels)	English C & any BTEC at Merit

Art

Subject	Art
Qualification	AS/A2
Exam Board	WJEC
Assessment	<p>Unit Outline – AS The A level Art specification offers a practical course with maximum opportunities for a stimulating experience of creativity and art, craft and design making activities.</p> <p>Unit 1: Coursework Portfolio Internally assessed, externally moderated. 60% AS or 30% A level</p> <p>Unit 2: Controlled Assignment Internally assessed, externally moderated. 40% AS or 20% A level</p> <p>Unit Outline - A2 Unit 3: Coursework Portfolio (including a 1000 word written element) Internally assessed, externally moderated. 30% A level</p> <p>Unit 4 Controlled Assignment Internally assessed, externally moderated. 20% A level</p>
Course Overview	<p>Unit Outline – AS Unit 1: Coursework Portfolio Based on Internally Set Themes - Students must produce a personal reflective portfolio of work (including a sketchbook) and at least one final outcome that explore the set theme.</p> <p>Unit 2: Controlled Assignment Students select a written, visual or multimedia stimulus to base a unit of work. Students will be expected to produce a personal reflective portfolio of work with a final outcome produced in an 8 hour exam.</p> <p>Unit Outline - A2 Unit 3: Coursework Portfolio (including a 1000 word written element) Based on Internally Set Themes - Students must produce a personal reflective portfolio of work (including a sketchbook) and at least one final outcome that explore the set theme. Students must also develop and present a 1000 word contextual study.</p> <p>Unit 4 Controlled Assignment Students select a written, visual or multimedia stimulus to base a unit of work. Students will be expected to produce a personal reflective portfolio of work with a final outcome produced in a 12 hour exam.</p>



Biology

Subject	Biology
Qualification	AS/A2
Exam Board	AQA
Assessment	<p>Unit Outline - AS</p> <p>Unit 1: Biology and Disease Externally assessed written examination. 33% AS: 16.5% Advanced GCE</p> <p>Unit 2: The variety of living organisms Externally assessed written examination. 46% AS: 23% Advanced GCSE</p> <p>Unit 3: Practical and Investigative Skills Internally assessed written examination, externally moderated. 21% AS: 11.5% Advanced GCSE</p> <p>Unit Outline - A2</p> <p>Unit 4: Populations and Environment Assessment: Externally assessed written examination. 17% A2: 8.5% Advanced GCE</p> <p>Unit 5: Control in Cells and in Organisms Assessment: Externally assessed written examination. 23% A2: 11.5% Advanced GCE</p> <p>Unit 6: Practical and Investigative Skills Internally assessed written examination, externally moderated. 60% A2: 80% Advanced GCE</p>
Course Overview	<p>Unit 1: Biology and Disease - Students will:</p> <ul style="list-style-type: none"> Learn how digestive and gas exchange systems may be affected by communicable and non-communicable diseases Develop a knowledge of basic biology allows us to understand the symptoms of disease and interpret data relating to risk factors. <p>Assessment: Externally assessed written examination.</p> <p>Unit 2: The variety of living organisms Students will:</p> <ul style="list-style-type: none"> Study the influence of genetic and environmental factors on intra-specific variation Understand how the variety of life is reflected in similarities and differences in its biochemical basis and cellular organisation Draw conclusions about how size and metabolic rate affect an organism's requirements and give rise to adaptations. <p>Unit 3: Practical and Investigative Skills Students will be assessed throughout the practical work in the contexts of Units 1 and 2. This will also examine their ability to interpret, analyse, conclude and evaluate Scientific evidence.</p> <p>Unit 4: Populations and Environment Students will:</p> <ul style="list-style-type: none"> understand that living organisms form ecosystems through which energy is transferred and chemical elements cycled investigate how human activity affects ecological balance in a variety of ways use evidence to show how genetic variation and isolation may lead to the formation of new species <p>Unit 5: Control in Cells and in Organisms - Students will:</p> <ul style="list-style-type: none"> understand the co-ordination of Stimulus and responses – the biology of the nervous and endocrine systems interpret how Homeostasis maintains a constant internal environment understand how genes control cells, organisms and genetic expression <p>Unit 6: Practical and Investigative Skills Students will be assessed throughout the practical work in the contexts of Units 1 and 2. This will also examine their ability to interpret, analyse, conclude and evaluate Scientific evidence.</p>

Business Studies

Subject	Business Studies
Qualification	AS & A2 Level
Exam Board	Edexcel
Assessment	<p>Unit Outline - AS Unit 1 – Developing New Business Ideas: Assessment: Externally assessed written examination. 50% of the AS marks and 25% of the total GCE marks</p> <p>Unit 2a – Managing the Business: Assessment: Externally assessed written examination. 50% of the AS marks and 25% of the total GCE marks</p> <p>Unit Outline – A2 Unit 3 – International Business: Assessment: Externally assessed written examination. 50% of the AS marks and 25% of the total GCE marks</p> <p>Unit 4a – Making Business Decisions: Assessment: Externally assessed written examination. 50% of the AS marks and 25% of the total GCE marks</p>
Course Overview	<p>Unit Outline AS Unit 1 – Developing New Business Ideas: This unit covers the characteristics students would need to develop to be successful in business and how new or existing businesses generate their product or service ideas and test them through market research. Students will also consider the competition in the market; the economic climate; how the business might be financed and how much revenue the idea might generate.</p> <p>Unit 2a – Managing the Business: This unit considers the market that the business may be operating in; how competition in the market and macroeconomic change is likely to affect it and how businesses can seek to minimise uncertainty through their actions.</p> <p>Unit Outline - A2 Unit 3 – International Business: The aim of this unit is to introduce the student to the world of international business and issues which a company trading internationally would have to consider. These include such discussions as why businesses seek international markets; how they decide on which markets to target, globalisation and a debate on whether multinationals are indeed a good force.</p> <p>Unit 4a – Making Business Decisions: In this unit, students consider why certain markets fail; how government decision making affects the economy and markets in which companies operate, and the income and welfare of private individuals. The unit will enable students to assess why government economic policy can succeed or fail and why regulation of some markets is necessary.</p>

Chemistry

Subject	Chemistry
Qualification	AS/A2
Exam Board	AQA
Assessment	<p>Unit Outline - AS</p> <p>Unit 1: Foundation Chemistry Assessment: Externally assessed written examination. 33.5% AS: 16.5% Advanced GCE</p> <p>Unit 2: Chemistry in Action Externally assessed written examination. 46% AS: 23% Advanced GCE</p> <p>Unit 3: Investigative and Practical Skills in AS Chemistry Internally assessed, externally moderated. 20.5% AS: 60.5% Advanced GCE</p> <p>Unit 4: Kinetics, Equilibria and Organic Chemistry Externally assessed written examination. 10% AS: 20% Advanced GCE</p> <p>Unit 5: Energetics, Redox and Inorganic Chemistry Externally assessed written examination 10% AS: 20% Advanced GCE</p> <p>Unit 6: Investigative and Practical Skills in A2 Chemistry Externally assessed written examination 80% AS: 10% Advanced GCE</p>
Course Overview	<p>Unit Outline - AS</p> <p>Unit 1: Foundation Chemistry This unit explores the fundamental principles that form the basis of Chemistry. Wherever possible, candidates should carry out experimental work to illustrate the theoretical principles included in this unit. The development of these skills is associated with the investigative and practical skills. Students will study:</p> <ul style="list-style-type: none"> • Atomic Structure • Amount of Substance • Bonding • Periodicity • Introduction to organic chemistry • Alkanes <p>Unit 2: Chemistry in Action This unit introduces more of the principles that underpin chemistry and looks at the applications of these principles and those that have been developed in Unit 1. Students will study:</p> <ul style="list-style-type: none"> • Energetics • Kinetics • Equilibria • Redox Reactions • Group VII, The Halogens • Group 2, Alkaline Earth metals • Extraction of Metals • Haloalkanes • Alkenes • Alcohols • Analytical techniques <p>Unit 3: Investigative and Practical Skills in AS Chemistry Candidates will carry out experimental and investigative activities in order to develop their practical skills. Experimental and investigative activities will be set in contexts appropriate to, and reflect the demand of, the AS year.</p>

Chemistry

Course Overview

Unit Outline - A2

Unit 4: Kinetics, Equilibria and Organic Chemistry

This unit develops the concepts of physical chemistry introduced at AS. Students will study:

- Physical and Organic Chemistry
- Kinetics
- Equilibria
- Acids and Bases
- Nomenclature and Isomerism in Organic Chemistry
- Compounds containing the Carbonyl Group
- Aromatic Chemistry
- Amines
- Amino Acids
- Polymers
- Organic Synthesis and Analysis
- Structure Determination

Unit 5: Energetics, Redox and Inorganic Chemistry

Students will study:

- Thermodynamics
- Periodicity
- Redox Equilibria
- Transition Metals
- Reactions of Inorganic Compounds in Aqueous Solution

Unit 6: Investigative and Practical Skills in A2 Chemistry

Candidates will carry out experimental and investigative activities in order to develop their practical skills. Experimental and investigative activities will be set in contexts appropriate to, and reflect the demand of, the A2 content. These activities will allow candidates to use their knowledge and understanding of Chemistry in planning, carrying out, analysing and evaluating their investigations.



Drama and Theatre Studies

Subject	Drama
Qualification	AS and A2 level
Exam Board	Edexcel
Assessment	<p>Unit 1 40% of AS, 20% of A level Internally assessed, externally moderated</p> <p>Unit 2 60% of AS, 30% of A level Externally assessed</p> <p>Unit 3 40% of A2, 20% of A level Internally assessed, externally moderated</p> <p>Unit 4 60% of A2, 30% of A level Written examination</p>
Course Overview	<p>AS Level:</p> <p>Unit 1: Exploration of drama and Theatre This unit introduces students to the content of plays written for the theatre. They will learn how to analyse plays in a variety of ways so that they become familiar with the way written plays can be interpreted for realisation in performance.</p> <p>Unit 2: Theatre Text in Performance This unit offers students the chance to demonstrate skills in a performance environment. The knowledge and understanding gained during the study of two plays in Unit 1 can now be applied with a view to delivering a performance to an audience.</p> <p>A2 Level:</p> <p>Unit 3: Exploration of Dramatic Performance This unit requires the creation of a unique and original piece of theatre. The knowledge and understanding gained in the AS units can now be applied to a created production. Students will be assessed on both the process of creation and the finished product in the form of a performance to an invited audience.</p> <p>Unit 4: Theatre Text in Context This externally examined written unit requires the detailed study of one set play text and one prescribed historical period of theatrical development.</p>

Economics

Subject	Economics
Qualification	AS/A2
Exam Board	Edexcel
Assessment	<p>Unit Outline – AS Unit 1: Competitive Markets - How They Work and Why They Fail Externally assessed written examination. 50% of the AS marks and 25% of the total GCE marks</p> <p>Unit 2 - Managing the Economy: Externally assessed written examination. 50% of the AS marks and 25% of the total GCE marks</p> <p>Unit Outline – A2 Unit 3: Business Economics and Economic Efficiency Externally assessed written examination 40% of the A2 marks and 20% of the total GCE marks</p> <p>Unit 4: The Global Economy Externally assessed written examination 40% of the A2 marks and 20% of the total GCE marks</p>
Course Overview	<p>Unit Outline – AS Unit 1: Competitive Markets - How They Work and Why They Fail This unit provides an introduction to the nature of economics and examines how the price mechanism allocates resources in markets. It analyses the nature of market failure, its causes and possible market remedies. At the end of this unit, students should be able to apply supply and demand analysis to real-world situations; to understand why markets might not allocate resources efficiently and the methods of dealing with market failure, together with an evaluation of their effectiveness.</p> <p>Unit 2 - Managing the Economy: This unit introduces key measures of economic performance and the main objectives and instruments of economic policy. Students should be able to use a basic AD/AS model to understand why demand and supply side policies may be seen as appropriate ways of managing an economy, predict possible impact of such policies, argue for different approaches and identify criteria for success</p> <p>Unit Outline - A2 Unit 3: Business Economics and Economic Efficiency -The content of unit one is developed here to examine how the pricing and nature of competition between firms is affected by the number and size of market participants. Students should be able to appraise how government intervention in markets is aimed at promoting competitive markets.</p> <p>Unit 4: The Global Economy - This unit develops the knowledge and skills gained in Unit 2 so that they can be applied in a global context. The application, analysis and evaluation of economic models is required as well as an ability to assess policies which might be used to deal with economic problems. Students study the economics of trade and the development of the international economy in the context of world economic institutions such as the IMF, the World Bank and the World Trade Organisation as well as the multinational company. Students have the opportunity to explore current real world problems in economics such as the economic impact of aids in Southern Africa; factors affecting the price of commodities such as coffee and the impact of Fair Trade programmes on world trade.</p>

English Literature

Subject	English Literature
Qualification	A/S and A2 level
Exam Board	Edexcel
Assessment	<p>A/S 1x exam 1x coursework</p> <p>A2 1x exam 1x coursework</p>
Course Overview	<p>A/S: Exam 2 hours 15 mins</p> <p>Section A: Unseen poetry/prose</p> <p>Section B: Poetry essay on land. Poems from 'The Rattlebag' anthology.</p> <p>Section C: Prose essay on 'Jane Eyre'- Emily Bronte and 'Wide Sargasso Sea'- Jean Rhys</p> <p>Coursework: 2,500 word essay</p> <p>Compare and contrast the presentation of women in Othello and Macbeth. Your study should refer to relevant contextual material and also include appropriate references of the plays by other critics.</p> <p>A2: Exam 2 hours 45 mins</p> <p>Section A: Unseen poetry and prose analysis</p> <p>Section B: Essay on <i>Identifying Self</i> using the texts:</p> <p>Great Expectations- Charles Dickens (1861) Life of Pi- Yan Martel (post 1990) The Wife of Bath- Geoffrey Chaucer (1386-7) The Fat Black Woman's Poems- Grace Nichols (1984)</p> <p>Coursework: Independent literary focus on text: 2,500 to 3,000 words</p> <p>This allows students a free choice in texts to study. The subject teacher becomes more like a mentor through this process.</p>

Film Studies

Subject	Film Studies
Qualification	AS and A2 level
Exam Board	WJEC
Assessment	<p>Unit 1 40% of AS, 20% of A level Internally assessed, externally moderated</p> <p>Unit 2 60% of AS, 30% of A level Externally assessed</p> <p>Unit 3 50% of AS, 25% of A level Internally assessed, externally moderated</p> <p>Unit 4 50% of AS, 25% of A level Externally assessed</p>
Course Overview	<p>AS Level:</p> <p>Unit 1: Exploring Film Form (Coursework) Part 1: An in-depth study of the micro-aspects of a chosen film clip (1500 word essay) Part 2: A practical project in which students create a short film and evaluate its success</p> <p>Unit 2: British and American Film (Examination) Three sections, one question from each: Section A: Producers and Audiences Section B: British Film Section C: US Film – A comparative study of two films</p> <p>A2 Level:</p> <p>Unit 3: Film Research and Creative Projects (Coursework) Part 1: A detailed analysis of a chosen area of study (e.g. genre or a particular director) in relation to 1 or more films.</p> <p>Part 2: A creative project based on a chosen area of AS/A2 study comprising of three elements:</p> <ul style="list-style-type: none"> - aims and context - a creative product (e.g. short film/film extract/screenplay) - a reflective analysis <p>Unit 4: Varieties of Film Experience – Issues and Debates (Examination) Three sections, one question from each: Section A: World Cinema topics Section B: Spectatorship topics Section C: Single Film - Critical Study</p>

French

Subject	French
Qualification	AS & A2 Level
Exam Board	AQA
Assessment	<p>The AS specification has 2 units:</p> <p>Unit 1: Listening, Reading and Writing</p> <ul style="list-style-type: none"> Candidates will answer a range of questions based on approximately 5 minutes of heard material They will answer a range of questions based on a selection of written stimulus texts. They will also respond in writing to a question based on one of the AS topics. <p>Assessment: Externally assessed, written paper 2 hours</p> <p>70% AS - 35% A2</p> <p>Unit 2: Speaking test</p> <ul style="list-style-type: none"> Candidates will discuss a target-language stimulus card based on one of the AS topics and take part in a conversation covering three further AS topics. <p>Assessment: Internally assessed and externally moderated, Speaking test: 35 minutes (including 20 minutes preparation)</p> <p>30% AS - 15% A2</p> <p>The A2 specification also has 2 units:</p> <p>Unit 3 Listening, Reading and Writing</p> <ul style="list-style-type: none"> Candidates will answer a range of questions based on approximately 6 minutes of heard material They will answer a range of questions based on a selection of written texts. They will also respond in writing to a question based on one of the four A2 Cultural topic areas. <p>Assessment: Externally assessed, written paper 2 ½ hours</p> <p>35% A2</p> <p>Unit 4: Speaking Test</p> <ul style="list-style-type: none"> Candidates will present a point of view based on a target-language stimulus card from one of the A2 topic areas and take part in a conversation covering two further A2 topics. <p>Assessment: Internally assessed and externally moderated, Speaking test: 35 minutes (including 20 minutes preparation)</p> <p>15% A2</p>
Course Overview	<p>The AS course will cover:</p> <ul style="list-style-type: none"> Media: TV, advertising and communication technology Popular culture: cinema, music and fashion/trends Healthy living/lifestyle: sport/exercise, health and well-being and holidays Family/relationships: relationships within the family, friendships and marriage/partnerships.

Further Mathematics MEI

Subject	Further Mathematics MEI (Mathematics in Education and Industry)
Qualification	AS/A2
Exam Board	OCR
Assessment	<p>Unit Outline - AS Unit 1: Further concepts for Advanced Mathematics Externally assessed written examination, 33% AS: 16.6% Advanced GCE</p> <p>Unit 2: Decision Mathematics 1. Externally assessed written examination, 33% AS: 16.6% Advanced GCE</p> <p>Unit 3: Numerical Methods. Externally assessed written examination, 33% AS: 16.6% Advanced GCE. NM includes a single piece of coursework which will count for 20% of the assessment of the unit, internally marked, and externally moderated.</p> <p>Unit Outline - A2 Unit 4: Further Methods for Advanced Mathematics. Externally assessed written examination, 33% AS: 16.6% Advanced GCE.</p> <p>Unit 5: Mechanics 2. Externally assessed written examination, 33% AS: 16.6% Advanced GCE</p> <p>Unit 6: Statistics 2. Externally assessed written examination, 33% AS: 16.6% Advanced GCE.</p>
Course Overview	<p>Unit Outline - AS Unit 1: Further concepts for Advanced Mathematics To develop an understanding of the rigour and technical accuracy needed for more advanced study of mathematics.</p> <p>Unit 2: Decision Mathematics 1. To give students experience of modelling and of the use of algorithms in a variety of situations.</p> <p>Unit 3: Numerical Methods To provide students with an understanding that many mathematical problems cannot be solved analytically but require numerical methods.</p> <p>Unit Outline - A2 Unit 4: Further Methods for Advanced Mathematics. To build on and extend students' knowledge of Pure Mathematics and associated techniques.</p> <p>Unit 5: Mechanics 2. To build on the work in Mechanics 1 by extending the range of mechanics concepts which students are able to use in modelling situations. Students will be able to use the rigid body model in simple cases involving moments.</p> <p>Unit 6: Statistics 2. to extend students' ability to represent data in bivariate situations, with an emphasis on linear and rank order modelling, and associated hypothesis testing.</p>

Geography

Subject	Geography
Qualification	AS/A2
Exam Board	Edexcel
Assessment	<p>Unit Outline - AS</p> <p>Unit 1: Global Challenge Externally Assessed in a 90 minute exam. 60% AS: 30% Advanced GCE</p> <p>Unit 2: Geographical Investigations Externally assessed examination 40% AS: 20% Advanced GCE</p> <p>Unit Outline - A2</p> <p>Unit 3: Contested Planet External examination 60% A2: 30% Advanced GCE</p> <p>Unit 4: Geographical research Externally assessed written examination 40% A2: 20% Advanced GCE</p>
Course Overview	<p>Unit Outline – A2</p> <p>Unit 1: Global Challenge – Students will study the meaning, causes, impacts and management of global challenges. There are two compulsory topics that you must study in this unit:</p> <ul style="list-style-type: none"> • Topic 1: Going Global • Topic 2: World at risk <p>Students are examined on their response to data, interpreting sources in short answer questions and guided essay in either going global or worlds at risk.</p> <p>Unit 2: Geographical investigations Students study how human and physical issues influence lives and how these issues can be managed. There are two compulsory topics that you must study in this unit:</p> <ul style="list-style-type: none"> • Topic 1: Crowded Coasts reveals how increasing development is testing our ability to manage these valued environments. • Topic 2: Unequal spaces explore the causes and consequences of rural and urban disparities and how to manage them <p>The exam comprise of 3 parts; a data response, investigation/evaluation skills and related impacts/management issues.</p> <p>Unit 3: Contested Planet - The use and management of resources is a key issue for geography in today's world and therefore makes this an important area for study. Consumption patterns highlight stark inequalities between regions, countries and groups of people. Many resources are finite, and rising consumption means that difficult decisions over the use of resources will have to be taken more frequently. There are six topics: Topic 1: Energy Security Topic 2: Water Conflicts Topic 3: Biodiversity Under Threat Topic 4: Superpower Geographies Topic 5: Bridging the Development Gap Topic 6: The Technological Fix?</p> <p>Unit 4: Geographical research Students select an option to study, Options range from those with a strong physical geography focus, to those concerned: Option 1: Tectonic Activity and Hazards Option 2: Cold Environments — Landscapes and Change Option 3: Life on the Margins — the Food Supply Problem Option 4: The World of Cultural Diversity Option 5: Pollution and Human Health at Risk Option 6: Consuming the Rural Landscape — Leisure and Tourism.</p>

History

Subject	History
Qualification	AS/A2
Exam Board	Edexcel
Assessment	<p>Unit Outline - AS</p> <p>Unit 1: Historical Themes in Breadth Externally assessed written examination, 50% AS; 25% Advanced GCE</p> <p>Unit 2: British History Depth Studies Externally assessed written examination, 50% AS; 25% Advanced GCE</p> <p>Unit Outline - A2</p> <p>Unit 3: Depth Studies and Associated Historical Controversies Externally assessed written examination, 60% A2; 30% Advanced GCE</p> <p>Unit 4: Historical Enquiry Internally assessed, externally moderated extended essays, 40% A2; 20% Advanced GCE</p>
Course Overview	<p>Unit Outline – AS</p> <p>Unit 1: Historical Themes in Breadth Two topics, chronologically arranged, are studied - the focus is on historical themes in breadth. This means you will understand and explain why things changed over a period of time, with the ability to analyse differing points of view offered by historians.</p> <p>Russian in Revolution 1881 – 1924: Students will:</p> <ul style="list-style-type: none"> • Understand why Russia changed from being ruled by a monarch with absolute power to become the world's first communist state • Look at the interpretations that attempt to explain the causes of the Revolution • Study the rise of one man, Lenin, above other leaders in the creation of the USSR. <p>Stalin's Russia – 1924 – 1953: Students will:</p> <ul style="list-style-type: none"> • Analyse the reasons for Stalin's assumption of power • Chart the establishment and consolidation of the communist state • Study the impact of the purges on society and the economy • Analyse the legacy of Stalin for the future welfare of the USSR. <p>Unit 2: British History Depth Studies The course is a study of British history in depth using source materials. We will be looking at the attitudes, beliefs and structures of the societies which we study. You must be able to reach reasoned and supported judgements using evidence</p> <p>Britain and the Nationalist challenge in India 1900-47 Students will study:</p> <ul style="list-style-type: none"> • The importance of the Indian Empire to Britain: politically, commercially and culturally. British rule in India, c1900-14 and its impact on Indians and the British living in India. • The significance of the First World War on the relationship between Britain and India. • The rise of nationalism in India: development of Congress and growing importance of the Muslim League; Gandhi, Nehru and Jinnah to 1939.

ICT

Subject	ICT
Qualification	A-Level ICT (Applied)
Exam Board	Edexcel
Assessment	<p>AS Level</p> <p>3 Units:</p> <p>2 coursework based (66%)</p> <p>1 practical exam (34%)</p> <p>A2 Level</p> <p>3 Units:</p> <p>2 coursework based (66%)</p> <p>1 practical exam (34%)</p>
Course Overview	<p>What do I need to know or be able to do before taking this course?</p> <p>You are suitable for the GCE in Applied ICT if you have one or more of the following:</p> <ul style="list-style-type: none"> • An A*- B grade at GCSE ICT or equivalent • Other level 2 qualifications such as GCSE (DoubleAward) in Applied ICT at grades AA-BB; Intermediate GNVQ in ICT; Edexcel Qualification in Digital Applications; Edexcel BTEC First Diploma IT Practitioners • You should also have an interest in developing the knowledge and skills you need to be a competent and informed ICT user and practitioner. <p>What kind of student is this course suitable for?</p> <p>You will enjoy this course if you would like to:</p> <ul style="list-style-type: none"> • be able to select and use appropriate ICT tools and techniques to help you carry out investigations; capture and handle data; solve problems; make decisions; present and communicate information • increase your awareness of the benefits and drawbacks of ICT and its impact on the way people live their lives; learn how to plan and manage projects and work effectively with others <p>In the A2 units you will learn about:</p> <ul style="list-style-type: none"> • Using Database Software - Unit 7 • Managing ICT projects - Unit 8 • Using Multimedia Software - Unit 10 <p>Is the qualification structured like other GCEs?</p> <p>Yes, the qualification has an AS/A2 structure. AS is short for Advanced Subsidiary. This is the first half of the Advanced GCE course. It is a stepping stone to the full Advanced GCE qualification. You can take the AS on its own, if you and your teacher agree that this is best for you. You can also decide at the end of the AS course to continue with the course and take the A2 units for the full Advanced GCE qualification.</p> <p>What will I learn about on this course?</p> <p>The AS units focus on developing your communication and decision - making skills. You will learn about:</p> <p>The Information Age - Unit 1</p> <p>The Digital Economy - Unit 2</p> <p>The Knowledge Worker - Unit 3</p> <p>In the A2 units you will learn about:</p> <p>Using Database Software - Unit 7:</p> <p>Managing ICT projects - Unit 8</p> <p>Using Multimedia Software - Unit 10</p>

Law

Subject	Law
Qualification	AS/A2
Exam Board	OCR
Assessment	<p>Unit Outline - AS Unit 1: Externally assessed written examination 60% AS: 30% Advanced GCE</p> <p>Unit 2: Externally assessed written examination. 40% AS: 20% Advanced GCE</p> <p>Unit Outline - A2 Externally assessed written examination</p>
Course Overview	<p>Unit Outline - AS Unit 1: provides an introduction to the English Legal system Students learn about criminal and civil law; how the courts work; the work of solicitors, barrister, judges and magistrates; the role of the jury, sentencing procedures and punishment. The powers of the police and the responsibilities of citizens are also discussed.</p> <p>Unit 2: looks at some of the Sources of Law in the UK. The concept of judicial precedent is studied, statutory interpretation, the role of parliament in making laws as well as the European Union. Reform of the law and the legal system is also studied.</p> <p>Unit Outline - A2 Two main areas of law are covered at A2 this includes criminal law and law of torts. In each section the second unit is a special study based on pre-released material.</p> <p>Units 3 & 4 cover aspects of criminal law including murder, manslaughter, theft, burglary, general defences and offences against property.</p> <p>Units 7 & 8 cover the law of torts including negligence, trespass and nuisance.</p>



Mathematics

Subject	Mathematics
Qualification	AS/A2
Exam Board	OCR
Assessment	<p>Unit Outline - AS Unit 1: Introduction to Advanced Mathematics Externally assessed written examination, 33% AS: 16.6% Advanced GCE</p> <p>Unit 2: Concepts for Advanced Mathematics Externally assessed written examination, 33% AS: 16.6% Advanced GCE</p> <p>Either Unit 3: Statistics 1 or Unit 3: M1 - Mechanics 1. Externally assessed written examination,</p> <p>Unit Outline - A2 Unit 4: Methods for Advanced Mathematics. Externally assessed written examination, 33% AS: 16.6% Advanced GCE. C3 includes a single piece of coursework which will count for 20% of the assessment of the unit, internally marked, and externally moderated.</p> <p>Unit 5: Applications of Advanced Mathematics. Externally assessed written examination, 33% AS: 16.6% Advanced GCE</p>
Course Overview	<p>Unit Outline - AS Unit 1: Introduction to Advanced Mathematics To build on and develop the techniques students have learnt at GCSE so that they acquire the fluency required for advanced work.</p> <p>Unit 2: Concepts for Advanced Mathematics To introduce students to a number of topics which are fundamental to the advanced study of mathematics.</p> <p>Either Unit 3: Statistics 1 To enable students to build on and extend the data handling and sampling techniques they have learnt at GCSE. or Unit 3: M1 - Mechanics 1. To introduce students to mathematical modelling and to the basic concepts in kinematics, statics and dynamics which underlie the study of mechanics.</p> <p>Unit Outline - A2 Unit 4: Methods for Advanced Mathematics. To build on and develop the techniques students have learnt at AS Level, with particular emphasis on the calculus.</p> <p>Unit 5: Applications of Advanced Mathematics. To develop the work in previous units in directions which allow it to be applied to real world problems.</p>

Media

Subject	Media
Qualification	AS and A2 level
Exam Board	AQA
Assessment	<p>Unit 1 – MEST 1 50% of AS, 25% of A level 2 hour written examination</p> <p>Unit 2 – MEST 2 50% of AS, 25% of A level Practical unit, internally assessed and externally modified</p> <p>Unit 3 – MEST 3 25% of A level 2 hour written examination</p> <p>Unit 4 – MEST 4 25% of A level Practical unit, internally assessed and externally modified</p>
Course Overview	<p>AS Level:</p> <p>MEST 1: Investigating Media Section A – Four compulsory short answer questions on the key media concepts: <ul style="list-style-type: none"> • Media Language • Representation • Audience • Institution Section B – One long answer question on a cross-media study completed in class.</p> <p>MEST 2: Creating Media Two linked production pieces taken from two of the three media platforms studied in MEST 1 plus 1500 word evaluation.</p> <p>A2 Level:</p> <p>MEST 3: Critical Perspectives Section A – Three compulsory questions on unseen stimulus pieces.</p> <p>Section B – One essay from a choice of two topics: Representation or New/Digital Media</p> <p>MEST 4: Media: Research and Production Section 1 – A critical investigation of a media-related study of your choice Section 2 – A linked production piece</p>

Philosophy and Ethics

Subject	Philosophy and Ethics
Qualification	AS and A2 level
Exam Board	OCR
Assessment	<p>AS modules G571/2 are each examined by a 1 1/2 hour written paper one in the January of year 12 and the other in the summer of Year 12. Each paper is worth 50% of the AS grade (25% of A level).</p> <p>A2 modules G581/2 are each examined by a 1 1/2 hour written paper one in the January of year 13 and the other in the summer of Year 13. Each paper is worth 25% of the A level grade.</p> <p>Unit 1 Written examination</p> <p>Unit 2 Written examination</p> <p>Unit 3 Written examination</p> <p>Unit 4 Written examination</p>
Course Overview	<p>AS Level:</p> <p>Unit 1 - AS Philosophy of Religion This unit begins with a look at how both the Ancient Greek Philosophers (Plato and Aristotle) and the Judaeo-Christian beliefs about God influenced the study of the philosophy of religion. It then goes on to examine the traditional arguments for the existence of God and the challenges to religious belief as presented by the Problem of Evil and Science.</p> <p>Unit 2 - AS Religious Ethics This unit comprises of two sections: Ethical Theories and Applied Ethics. In Ethical Theories, students are introduced to the ethical thinking of key philosophers, such as Aquinas, Kant, Bentham and Mill as well as from a religious perspective. In Applied Ethics, students will look at how the Ethical Theories can be applied to ethical situations such as Abortion, Euthanasia, Genetic Engineering and War.</p> <p>A2 Level:</p> <p>Unit 3: This unit examines whether language is meaningful when talking of God and whether religious experiences and miracles are plausible in the modern world. It also questions the distinction between the body and the soul and asks whether humans are free if God is omniscient.</p> <p>Unit 4: This unit questions the meaning of ethical words, such as 'good', 'bad', 'right' and 'wrong' as well as asking whether we are morally free to behave as we wish. It also examines the nature and role of conscience and analyses the effectiveness of Aristotle's Virtue Ethics. These ethical theories are then applied to Business Ethics, Sexual Ethics and Environmental Ethics.</p>

Physics

Subject	Physics
Qualification	AS/A2
Exam Board	AQA
Assessment	<p>Unit Outline – AS</p> <p>Unit 1: Particles, quantum phenomena and electricity Externally assessed written examination. 40% AS: 20% Advanced GCE</p> <p>Unit 2: Mechanics, materials and waves Externally assessed practical examination. 40% AS: 20% Advanced GCE</p> <p>Unit 3: Investigative and practical skills in AS Physics Externally assessed practical examination 20% AS: 10% Advanced GCE</p> <p>Unit Outline - A2</p> <p>Unit 4: Fields and further mechanics Externally assessed written examination. 20% Advanced GCE</p> <p>Unit 5: Nuclear Physics and Optional Units Externally assessed written examination. 20% Advanced GCE</p> <p>Unit 6: Investigative and practical skills in A2 Physics Externally assessed practical examination or coursework. 10% Advanced GCE</p>
Course Overview	<p>Unit Outline – A2</p> <p>Unit 1: Particles, quantum phenomena and electricity This unit involves two contrasting topics in physics: particle physics and electricity. Through the study of these topics, students should gain an awareness of the on-going development and new ideas in physics and of the application of in-depth knowledge of well-established topics such as electricity. Particle physics introduces students to the fundamental properties and nature of matter, radiation and quantum phenomena. In contrast, the study of electricity in this module builds on and develops previous GCSE studies and provides opportunities for practical work and looks into important applications.</p> <p>Unit 2: Mechanics, materials and waves This unit is about the principles and applications of mechanics, materials and waves. The first section introduces vectors and then develops knowledge and understanding of forces and energy from GCSE Additional Science. In the second section, materials are studied in terms of their bulk properties and tensile strength. The final section extends GCSE studies on waves by developing in-depth knowledge of the characteristics, properties and applications of waves, including refraction, diffraction, superposition and interference.</p> <p>Unit 3: Investigative and practical skills in AS Physics Candidates should carry out experimental and investigative activities in order to develop their practical skills. Experimental and investigative activities should be set in contexts appropriate to, and reflect the demand of, the AS content. These activities should allow candidates to use their knowledge and understanding of Physics in planning, carrying out, analysing and evaluating their work.</p> <p>Unit 4: Fields and further mechanics Building on the key ideas and knowledge covered in AS physics. The first section advances the study of momentum and introduces circular and oscillatory motion and covers gravitation. Electric and magnetic fields are covered, together with basic electromagnetic induction. Electric fields lead into capacitors and how quickly they charge and discharge through a resistor. Magnetic fields lead into the generation and transmission of alternating current.</p>

Physics

Course Overview

Unit 5: Nuclear Physics and Optional Units

This module consists of two sections. The first part of Section A 'Nuclear and Thermal Physics' looks at the characteristics of the nucleus, the properties of unstable nuclei and how energy is obtained from the nucleus. In the second part of section A, the thermal properties of materials and the properties and nature of gases are studied in depth. Section B offers an opportunity to study one of the following optional topics to gain deeper understanding and awareness of a selected branch of physics;

- Astronomy and Cosmology,
- Medical Physics,
- Applied Physics,
- Turning Points in Physics.

Unit 6: Investigative and practical skills in A2 Physics



Product Design

Subject	Product Design
Qualification	AS & A2 Level
Exam Board	Edexcel
Assessment	<p>1 exam in Year 12 (AS Level) – Design and Technology in Practice: 1 hour 30 minute examination set and marked by Edexcel. The paper will be a question and answer booklet, consisting of short-answer and extended-writing type questions, all of which are compulsory, equal to 40% of the total of AS Marks and 20% of the total GCE Marks.</p> <p>1 exam in Year 13 (A2 level) – Designing for the future: Longer style exam questions) – 2 hours examination set and marked by Edexcel. The paper will be a question and answer booklet, consisting of short-answer and extended-writing type questions, all of which are compulsory, equal to 40% of the total of A2 Marks and 20% of the total GCE Marks.</p>
Course Overview	<p>AS Level:</p> <p>Portfolio of creative skills: Students will produce one portfolio with three distinct sections which will demonstrate their creativity and flair when investigating, designing and making product(s) which must comply with the requirements of resistant materials technology product. This is Internally assessed and externally moderated, equal to 60% of the total of AS Marks and 30% of the total GCE Marks.</p> <p>A2 Level:</p> <p>Commercial design: In this unit students are given the opportunity to apply the skills they have acquired and developed throughout this course of study, to design and make a product of their choice that comply with the requirements of resistant materials technology Product. This is internally set and marked and externally assessed, equal to 60% of the total of A2 Marks and 30% of the total GCE Marks.</p>

Psychology

Subject	Psychology
Qualification	AS/A2
Exam Board	AQA
Assessment	<p>Unit Outline – AS</p> <p>Unit 1: Cognitive Psychology, Developmental Psychology and Research Methods Externally assessed written examination. 50% of the total AS marks, 25% of the total A2 marks</p> <p>Unit 2: Biological Psychology, Social Psychology and Individual Differences Externally assessed written examination. 50% of the total AS marks, 25% of the total A2 marks</p> <p>Unit 3: Topics in Psychology Externally assessed written examination. 25% of the total A2 marks</p> <p>Unit 4: Psychopathology, Psychology in Action and Research Methods Externally assessed written examination. 25% of the total A2 marks.</p>
Course Overview	<p>Unit Outline – AS</p> <p>Unit 1: Cognitive Psychology, Developmental Psychology and Research Methods Students will learn how to:</p> <ul style="list-style-type: none"> - Develop knowledge and understanding of concepts, theories and studies in relation to Cognitive Psychology and Psychology. - Develop skills of analysis, evaluation and application in relation to Cognitive Psychology and Developmental Psychology. - Develop knowledge and understanding of Research Methods associated with these areas of psychology. - Develop knowledge and understanding of ethical issues associated with these areas of psychology. <p>Knowledge and understanding of Research Methods should be developed through:</p> <ul style="list-style-type: none"> - Direct study of Research Methods. - Undertaking practical research activities involving collection, analysis and interpretation of qualitative and quantitative data. - and evaluation of studies relevant to the Cognitive and Developmental Psychology content of this unit. <p>Unit 2: Biological Psychology, Social Psychology and Individual Differences Students will learn how to:</p> <ul style="list-style-type: none"> - Develop knowledge and understanding of concepts, theories and studies in relation to individual differences, social psychology, biological psychology - Develop skills of analysis, evaluation and application in relation to individual differences, social psychology, biological psychology - Develop knowledge and understanding of research methods associated with these areas of psychology - Develop knowledge and understanding of ethical issues associated with these areas of psychology. <p>Unit Outline - A2</p> <p>Unit 3: Topics in Psychology Students will learn how to:</p> <ul style="list-style-type: none"> - Develop knowledge, understanding and skills of analysis and evaluation in relation to three topics selected from the Following: - Biological rhythms and sleep - Perception - Relationships - Aggression - Eating behaviour

Psychology

Course Overview

- Gender
- Intelligence and learning
- Cognition and development
- Develop knowledge, understanding and skills of analysis and evaluation in relation to relevant theories and studies in each of the three topics studied.
- Develop an understanding of the major approaches in psychology (cognitive, biological, behavioural and psychodynamic) through their study of the topics.
- Develop an appreciation of issues and debates as relevant to each topic studied: for example, issues of bias, including gender and culture, the role of animals in research, ethical issues, the nature/nurture debate, free will and determinism and reductionism.

Unit 4: Psychopathology, Psychology in Action and Research Methods

Students will learn how to:

- Develop knowledge and understanding of theories and studies relevant to the content for each area of psychology in this unit.
- and evaluate theories and studies relevant to the content for each area of psychology in this unit.
- Undertake practical research activities involving collection, analysis and interpretation of qualitative and quantitative data.



Sociology

Subject	Sociology
Qualification	AS/A2
Exam Board	AQA
Assessment	<p>Unit Outline – AS Unit 1: Culture and Identity; Families and Households; Wealth, Poverty and Welfare Externally moderated. 40% AS: 20% Advanced GCE</p> <p>Unit 2: Education, Health and Sociological Methods Assessment: Externally assessed examination 60% AS: 30% Advanced GCE</p> <p>Unit Outline - A2 Unit 3: Mass Media Externally moderated examination 20% Advanced GCE</p> <p>Unit 4: Crime and Deviance and Theory and Methods Externally assessed written examination 30% Advanced GCE</p>
Course Overview	<p>Unit Outline – A2 Unit 1: Culture and Identity; Families and Households; Wealth, Poverty and Welfare Students study 3 topics:</p> <ul style="list-style-type: none"> • Culture and Identity • Families and Households <p>Students learn about sociological theories and studies in relation to each topic and how these affect the society we live in today. In culture and identity they learn how culture is generated and viewed and people create identity. Students study the changing patterns in marriages, divorces, childhoods and relationships in the Families and households unit of study.</p> <p>Unit 2: Education, Health and Sociological Methods Students study three topics;</p> <ul style="list-style-type: none"> • Education • Sociological Methods. <p>Students study methods to carry out research, to organise and interpret their findings. They evaluate previous studies and look into sociological theories.</p> <p>Unit 3: Mass Media Students study the relationship between ownership and control of the mass media. They look at the processes of selection and presentation of the content of the news. They examine the different ways the Media represent age, social class, ethnicity, gender, sexuality and disability.</p> <p>Unit 4: Crime and Deviance and Theory and Methods Students study different theories of crime, deviance, social order and social control. They look at social distribution of crime and deviance by age, ethnicity, gender, locality and social class, including recent patterns and trends in crime. Students enquire into Crime control, prevention and punishment, victims, and the role of the criminal justice system and other agencies. The sociological study of suicide and its theoretical and methodological implications is included within the unit.</p>

Business

Subject	Business
Qualification	BTEC L3 Extended National Diploma (equivalent to 3 A levels)
Exam Board	Edexcel
Assessment	Assessment is coursework based. You will be assessed for each unit you take and if successful, graded with a pass, merit or distinction. The UCAS points you achieve at the end of the course depend on the number of passes, distinctions and merits you achieve, so it is preferable to aim for the highest grading right from the start.
Course Overview	<p>Full details of the course are available from: http://www.edexcel.com/quals/nationals10/business/Pages/default.aspx</p> <p>The BTEC National in Business is a vocationally based learning approach which is well established and understood by teaching professionals and employers alike. It can give students a head start in the employment world as they should be able to show awareness of the needs of businesses in the current environment, which is highly pressurised and have the ability to be flexible, a quality which is valued by employers.</p> <p>To complete the diploma you will have to study 18 units, four mandatory and a further fourteen optional.</p> <p>Mandatory Units - all four units must be taken</p> <p>The Business Environment Business Resources Introduction to Marketing Business Communication</p> <p>Specialist Units - a further fourteen units must be taken</p> <p>The academy is likely to offer the following units:</p> <p>The Business Environment Business Resources Introduction to Marketing Business Communication Business Accounting Creative Product Promotion Market Research in Business Human Resource Management in Business Understanding Retailing Internet Marketing in Business Recruitment and Selection in Business Aspects of Contract and Business Law Managing Teams in Business Aspects of Contract Law Aspects of Employment Law Starting a Small Business Understanding Business Ethics International Business</p>

Business

Subject	Business
Qualification	BTEC L2 First Diploma (equivalent to 4 GCSE's)
Exam Board	Edexcel
Assessment	Assessment is all coursework based. You will be assessed for each unit you take and if successful, you will be graded with a pass, merit or distinction.
Course Overview	<p>Unit Outline</p> <p>The BTEC First enables a Year 12 Student to either top up their existing GCSE portfolio or obtain the access qualification for a BTEC National Diploma. To complete the First Diploma in Business course you will study the four mandatory units(20 credits) and further units worth 40 credits in one year.</p> <p>Mandatory Units- all four units must be taken</p> <p>Business Purposes Business Organisations Financial Forecasting for Business People in Organisations</p> <p>Specialist Units- further units (40 credits) must be taken</p> <p>The Academy is likely to offer the following:</p> <p>Customer Relations in Business Business Online Business Enterprise Promoting and Branding in Retail Business</p>



Physical Education

Subject	Physical Education
Qualification	BTEC L3 Extended Diploma in Sport (Performance and Excellence)
Exam Board	Edexcel
Assessment	19 Units worth 180 credits 100% coursework Graded as Pass, Merit and Distinction
Course Overview	<p>9 Core units</p> <p>Unit 1 Principles of Anatomy and Physiology in Sport Unit 2 The Physiology of Fitness Unit 3 Assessing Risk in Sport Unit 4 Fitness Training and Programming Unit 7 Fitness Testing for Sport and Exercise Unit 11 Sports Nutrition Unit 17 Psychology for Sports Performance Unit 27 Technical and tactical Skills in Sport Unit 28 The Athletes lifestyle</p> <p>10 Specialist units</p> <p>Unit 5 Sports Coaching Unit 14 Exercise, Health and lifestyle Unit 15 Instructing Physical Activity and Exercise Unit 18 Sports Injuries Unit 19 Analysis of Sports Performance Unit 20 Talent identification and Development in Sport Unit 21 Sports and exercise Massage Unit 22 Rules, Regulations and Officiating in Sport Unit 25 Sport as a Business Unit 26 Work based Experience</p>



Physical Education

Subject	Physical Education
Qualification	AS/A2
Exam Board	OCR
Assessment	<p>Unit Outline - AS Unit 1: An Introduction to Physical Education Externally assessed written examination 50% AS: 25% A2</p> <p>Unit 2: Acquiring, Developing and Evaluating Practical Skills in Physical Education Internally assessed moderated portfolio of evidence. 50% AS: 25% A2</p> <p>Unit Outline - A2 Unit 3: Principles and Concepts across different areas of Physical Education Externally assessed written examination. 50% AS: 25% A2</p> <p>Unit 4: The Improvement of Effective Performance and the Critical Evaluation of Practical Activities in Physical Education Internally assessed, externally moderated. 50% A2: 25% A2</p>
Course Overview	<p>Unit Outline - AS Unit 1 An Introduction to Physical Education - The unit content is divided into three sections, with each section outlining the specific knowledge and understanding required by the student.</p> <p>Anatomy and Physiology (Section A) The skeletal and muscular systems Motion and movement The cardiovascular and respiratory systems in relation to the performance of physical activity</p> <p>Acquiring Movement Skills (Section B) Classification of motor skills and abilities The development of motor skills Information processing Motor control of skills in physical activity Learning skills in physical activity</p> <p>Socio-Cultural Studies relating to participation in physical activity (Section C) Physical activity Sport and culture Contemporary sporting issues</p> <p>Unit 2: Acquiring, Developing and Evaluating Practical Skills in Physical Education - The fundamental aim of this unit is to offer a framework of opportunities to develop practical experiences and conduct independent research into the structure, provision and analysis of physical activity. Students will have the chance to develop their performance in two chosen roles from a choice of three (performer, leader and official) and record their performance over a period of time. They will produce an analysis of their performances in the first task.</p>

Physical Education

Course Overview

Unit Outline - A2

Unit 3: Principles and Concepts across different areas of Physical Education

Section A: Socio-Cultural Options

Historical Studies (Option A1)

Popular recreation in pre-industrial Britain

Rational recreation in post-industrial Britain

19th-century public schools and their impact on the development of physical activities and young people

The developmental stages of athleticism in 19th-century public schools

Case Studies

Drill, physical training and Physical Education in state schools

Comparative Studies (Option A2)

The United Kingdom (UK)

The United States of America (USA)

Australia

Section B: Scientific Options

Sports Psychology (Option B1)

Individual aspects of performance

Group dynamics of performance and audience effects

Mental preparation for physical activity

Biomechanics (Option B2)

Linear motion in physical activity

Force physical activity

Fluid mechanics physical activity

Stability and angular motion physical activity

A critical evaluation of performance in selected physical activities

Exercise and Sport Physiology (Option B3)

Energy

Health components of physical fitness

Application of the principles of training

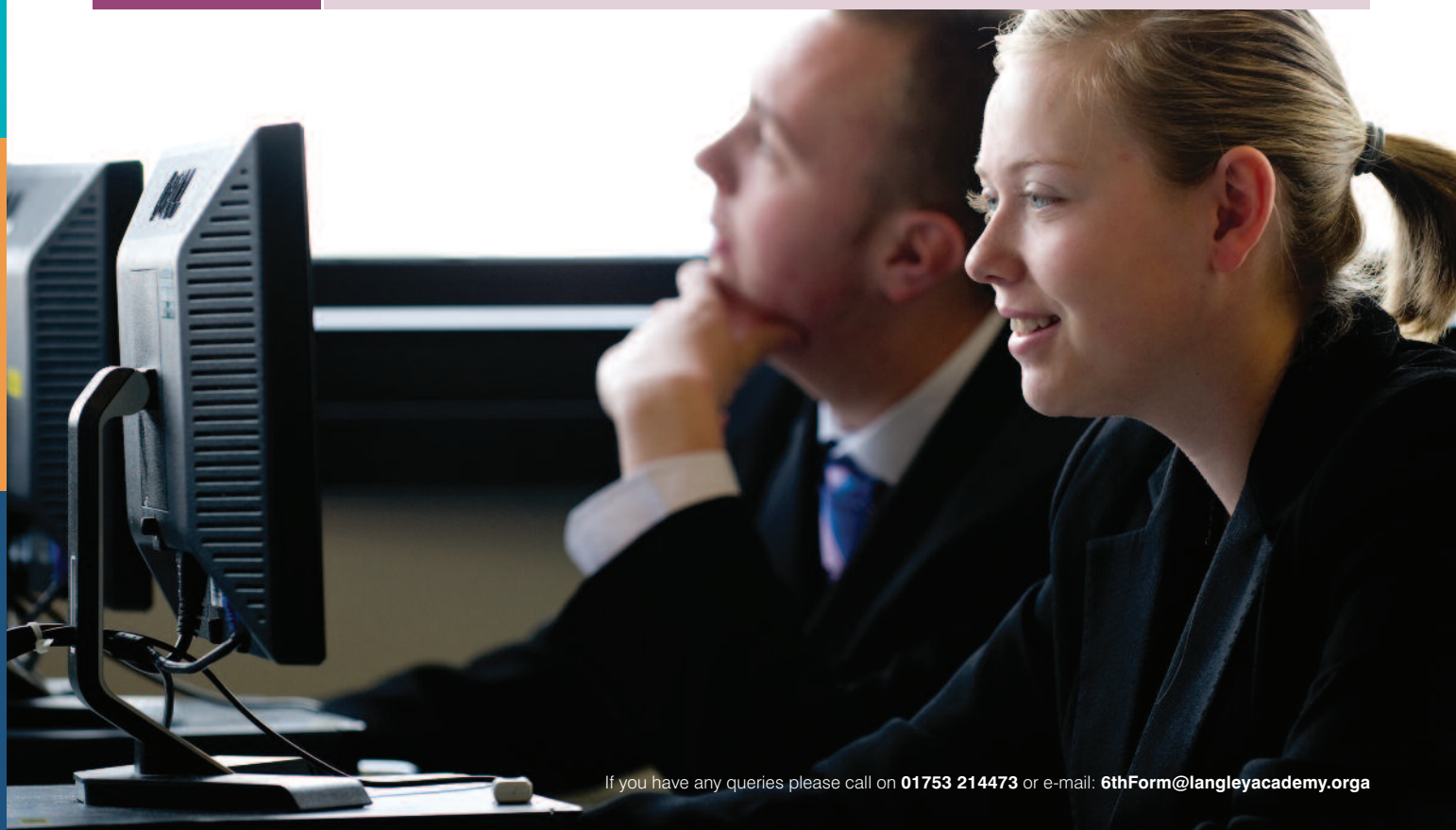
Performance enhancement

Unit 4: The Improvement of Effective Performance and the Critical Evaluation of Practical Activities in Physical Education

- The tasks undertaken in Unit 2: Acquiring, Developing and Evaluating Practical Skills in Physical Education lays the foundation for students to specialise in one practical performance role and progress this performance, and an Evaluation, Appreciation and Improvement of Performance.

Health & Social Care

Subject	Health & Social Care
Qualification	BTEC L3 Extended Diploma in Health and Social Care
Exam Board	Ed Excel
Assessment	18 Units worth 180 credits 100% coursework Graded as Pass, Merit and Distinction
Course Overview	<p>8 Mandatory Units</p> <p>Unit 1 Developing Effective Communication in Health and Social Care Unit 2 Equality, Diversity and Rights in Health and Social Care Unit 3 Health, Safety and Security in Health and Social Care Unit 4 Development through the life stages Unit 5 Anatomy and Physiology in Health and Social Care Unit 6 Personal and Professional Development in Health and Social Care Unit 7 Sociological Perspectives in Health and Social Care Unit 8 Psychological Perspectives in Health and Social Care</p> <p>10 Specialist units</p> <p>Unit 9- Values and Planning Unit 11- Safeguarding Adults and promoting independence Unit 10- Caring for Children Unit 12- Public Health Unit 14- Physiological Disorders Unit 19 – Applied sociological perspectives Unit 20- Promoting Health Unit 29 – Applied psychological perspectives Unit 2- Equality, diversity and rights Unit 3- Health, Safety and Security Unit 21- Nutrition</p>



Applied Science

Subject	Applied Science
Qualification	National Certificate (equivalent to 1 A level and may be taken with two A level)
Exam Board	Edexcel
Assessment	You will study 2 core units and 4 specialist units through the course. All are varied and have an assessment based upon a work related scenario. All units have an equal weighting.
Course Overview	<p>Unit Outline</p> <p>Core Units:</p> <p>Unit 1: Fundamentals of Science</p> <p>Unit 2: Scientific Practical Techniques</p> <p>Specialist units:</p> <p>Fundamentals of Science</p> <p>Working in the Science Industry</p> <p>Scientific Practical Techniques</p> <p>Perceptions of Science</p> <p>Application of Numbers for Science Technicians</p> <p>Mathematics for Science Technicians</p> <p>Statistics for Science Technicians</p> <p>Using Science in the Workplace</p> <p>Physiology of Human Body Systems</p> <p>Physiology of Human Regulation and Reproduction</p> <p>Biochemical Techniques</p> <p>Energy Changes, Sources and Applications</p> <p>Microbiological Techniques</p> <p>Chemistry for Biology Technicians</p> <p>Electrical Circuits and their Industrial Applications</p> <p>Genetics and Genetic Engineering</p> <p>Practical Chemical Analysis</p> <p>Medical Physics Techniques</p> <p>Biomedical Science Techniques</p> <p>Chemical Laboratory Techniques</p> <p>Science for Environmental Technicians</p> <p>Principles of Plant and Soil Science</p> <p>Industrial Applications of Chemical Reactions</p> <p>Chemical Periodicity and its Applications</p> <p>Industrial Applications of Organic Chemistry</p> <p>Criminology</p> <p>Forensic Evidence Collection and Analysis</p> <p>Forensic Photography</p> <p>Criminal Psychology</p> <p>All units are coursework based</p> <p>All units have an equal weighting</p>